

Explanation/Reference:

Section: Network Fundamentals

QUESTION 65

Which type of cable must you use to connect two devices with MDI interfaces?

- A. cut-through
- B. straight-through
- C. crossover
- D. rollover

Correct Answer: C

Section: Network Fundamentals

Explanation

Explanation/Reference:

Section: Network Fundamentals

QUESTION 66

Which type of IPv6 address also exists in IPv4 but is barely used?

- A. unicast
- B. multicast
- C. anycast
- D. broadcast

Correct Answer: C

Section: Network Fundamentals

Explanation

Explanation/Reference:

Section: Network Fundamentals

QUESTION 67

At which layer of the OSI model does PPP perform?

- A. Layer 3
- B. Layer 4
- C. Layer 2
- D. Layer 5

Correct Answer: C

Section: Network Fundamentals

Explanation

Explanation/Reference:

Section: Network Fundamentals

QUESTION 68

Which IPv6 header field is equivalent to the TTL?

- A. Hop Limit
- B. Flow Label
- C. TTD
- D. Hop Count
- E. Scan Timer

Correct Answer: A



Section: Network Fundamentals
Explanation

Explanation/Reference:
Section: Network Fundamentals

QUESTION 69

Which IP configuration does the CIDR notation 192.168.1.1/25 refer?

- A. 192.168.1.1 255.255.255.64
- B. 192.168.1.1 255.255.255.1
- C. 192.168.1.1 255.255.255.32
- D. 192.168.1.1 255.255.255.128
- E. 192.168.1.1 255.255.255.256

Correct Answer: D
Section: Network Fundamentals
Explanation

Explanation/Reference:
Section: Network Fundamentals

QUESTION 70

Which option is the correct CIDR notation for 192.168.0.0 subnet 255.255.255.252?

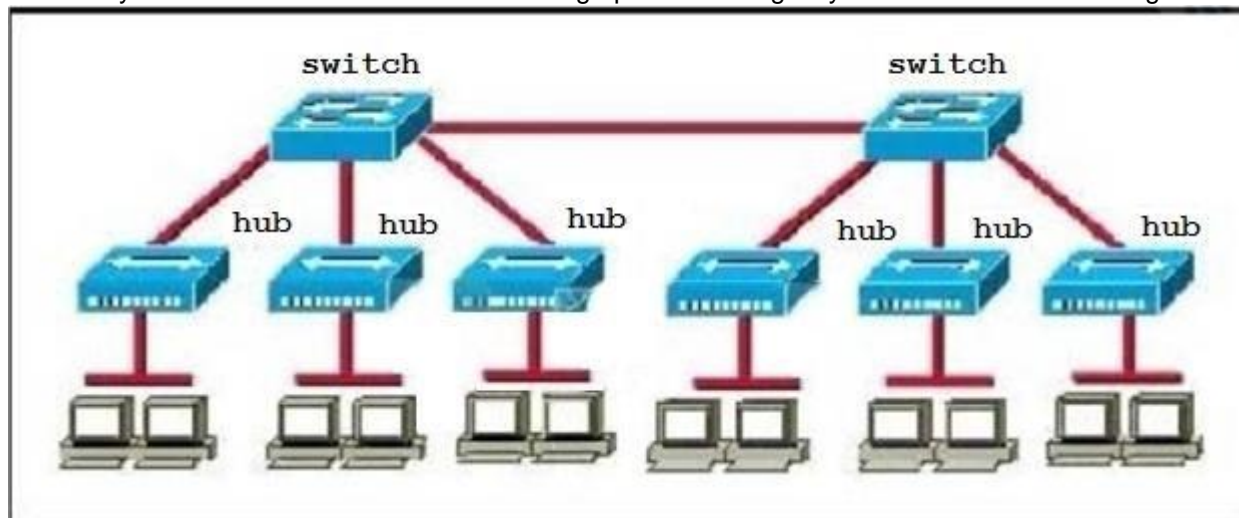
- A. 30
- B. 31
- C. 32
- D. 33

Correct Answer: A
Section: Network Fundamentals
Explanation

Explanation/Reference:
Section: Network Fundamentals

QUESTION 71

How many broadcast domains are shown in the graphic assuming only the default VLAN is configured on the switches?



- A. one
- B. six

- C. twelve
- D. two

Correct Answer: A

Section: Network Fundamentals

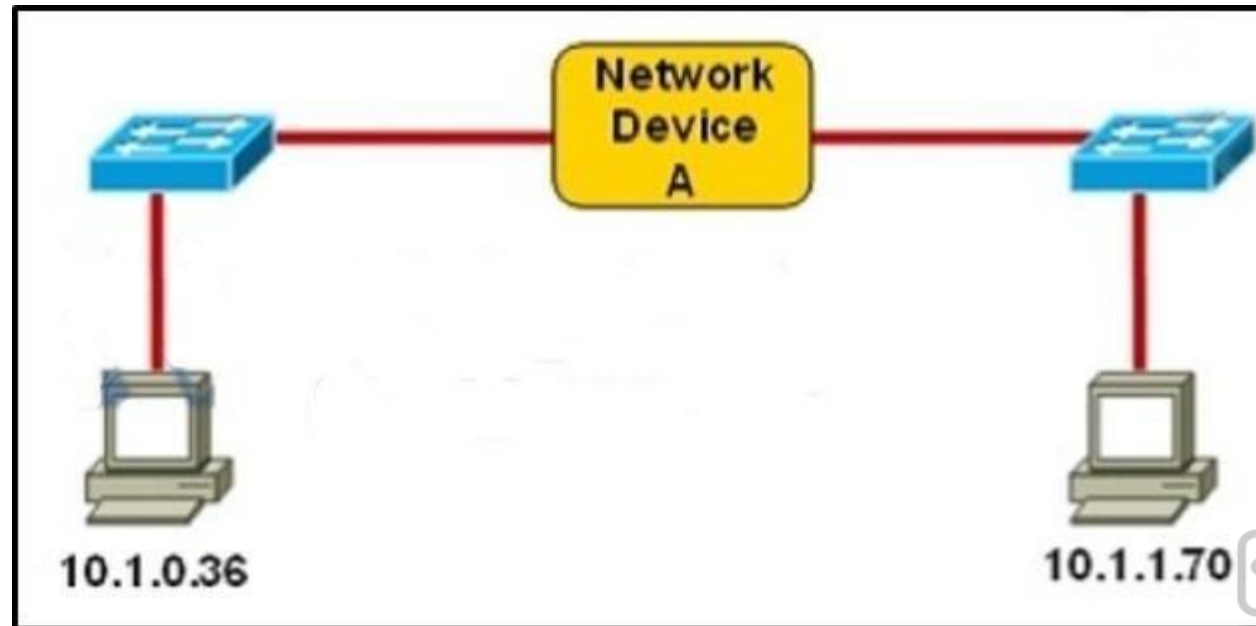
Explanation

Explanation/Reference:

Section: Network Fundamentals

QUESTION 72

Refer to the exhibit.



Which three statements correctly describe Network Device A? (Choose three.)

- A. With a network wide mask of 255.255.255.128, each interface does not require an IP address.
- B. With a network wide mask of 255.255.255.128, each interface does require an IP address on a unique IP subnet.
- C. With a network wide mask of 255.255.255.0, must be a Layer 2 device for the PCs to communicate with each other.
- D. With a network wide mask of 255.255.255.0, must be a Layer 3 device for the PCs to communicate with each other.
- E. With a network wide mask of 255.255.254.0, each interface does not require an IP address.

Correct Answer: BDE

Section: Network Fundamentals

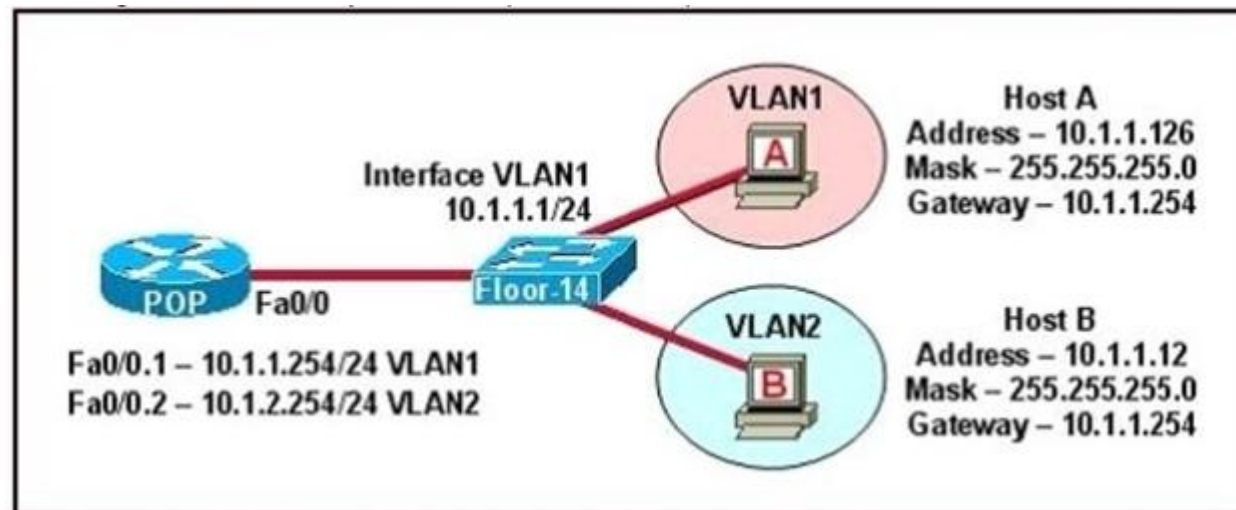
Explanation

Explanation/Reference:

Section: Network Fundamentals

QUESTION 73

Refer to the exhibit.



The network shown in the diagram is experiencing connectivity problems. Which of the following will correct the problems? (Choose two.)

- A. Configure the gateway on Host A as 10.1.1.1.
- B. Configure the gateway on Host B as 10.1.2.254.
- C. Configure the IP address of Host A as 10.1.2.2.
- D. Configure the IP address of Host B as 10.1.2.2.
- E. Configure the masks on both hosts to be 255.255.255.224.
- F. Configure the masks on both hosts to be 255.255.255.240.

Correct Answer: BD

Section: Network Fundamentals

Explanation

Explanation/Reference:

Section: Network Fundamentals



QUESTION 74

Which three encapsulation layers in the OSI model are combined into the TCP/IP application layer? (Choose three)

- A. Session
- B. transport
- C. presentation
- D. application
- E. data-link
- F. network

Correct Answer: ACD

Section: Network Fundamentals

Explanation

Explanation/Reference:

Section: Network Fundamentals

QUESTION 75

When is the most appropriate time to escalate an issue that you troubleshooting?

- A. When you lack the proper resources to resolve the issue.
- B. When a more urgent issue that requires your intervention is detected
- C. When you have gathered all available information about an issue
- D. When you have been unable to resolve the issue after 30 min

Correct Answer: C
Section: Network Fundamentals
Explanation

Explanation/Reference:
Section: Network Fundamentals

QUESTION 76
Which address class includes network 191.168.0.1/27?

- A. Class C
- B. Class B
- C. Class D
- D. Class A

Correct Answer: B
Section: Network Fundamentals
Explanation

Explanation/Reference:
Section: Network Fundamentals

QUESTION 77
Which RFC was created to alleviate the depletion of IPv4 public addresses?

- A. RFC 4193
- B. RFC 1519
- C. RFC 1518
- D. RFC 1918



Correct Answer: D
Section: Network Fundamentals
Explanation

Explanation/Reference:
Section: Network Fundamentals
Explanation

QUESTION 78
Which network topology allows all traffic to flow through a central hub?

- A. bus
- B. star
- C. mesh
- D. ring

Correct Answer: B
Section: Network Fundamentals
Explanation

Explanation/Reference:
Section: Network Fundamentals

QUESTION 79
Which statement about a router on a stick is true?

- A. Its data plane router traffic for a single VLAN over two or more switches

- B. It uses multiple subinterfaces of a single interface to encapsulate traffic for different VLANs on the same subnet
- C. It requires the native VLAN to be disabled
- D. It uses multiple subinterfaces of a single interface to encapsulate traffic for different VLANs.

Correct Answer: D

Section: Network Fundamentals

Explanation

Explanation/Reference:

Section: Network Fundamentals

QUESTION 80

Which component of the routing table ranks routing protocols according to their preferences?

- A. administrative distance
- B. next hop
- C. metric
- D. routing protocol code

Correct Answer: A

Section: Network Fundamentals

Explanation

Explanation/Reference:

Section: Network Fundamentals

QUESTION 81

Which two options are the best reasons to use an IPv4 private IP space? (Choose two)

- A. to enable intra-enterprise communication
- B. to implement NAT
- C. to connect applications
- D. to conserve global address space
- E. to manage routing overhead

Correct Answer: AD

Section: Network Fundamentals

Explanation

Explanation/Reference:

Section: Network Fundamentals

QUESTION 82

Assuming a subnet mask of 255.255.248.0, three of the following addresses are valid host addresses. Which are these addresses? (Choose three.)

- A. 172.16.9.0
- B. 172.16.8.0
- C. 172.16.31.0
- D. 172.16.20.0

Correct Answer: ACD

Section: Network Fundamentals

Explanation

Explanation/Reference:

Section: Network Fundamentals

